



02

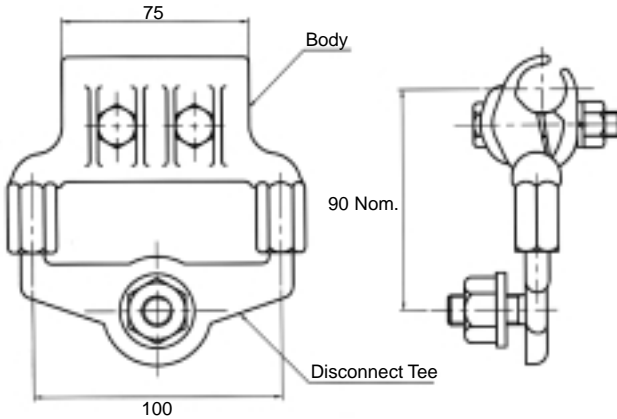


Bolted connectors and terminals

- › Tee Connectors
- › Bail Clamps
- › Service Tee Connectors
- › Service Taps
- › Split Bolt Clamps
- › Parallel Clamps
- › Parallel Groove Clamps
- › Tee Off Connectors
- › Bolted Lugs (Kulugs)

Disconnect Tee Connector

Type ADT5



Function: ADT connectors provide a convenient means of connecting lugged service conductors to overhead mains conductors.

Construction: **Body** - High strength cast aluminium.
Disconnect tee - Tin plated brass with threaded stud and hexagonal nut to take slotted conductor lug.

Hardware: **Conductor clamp** - M10 aluminium or stainless steel (Refer table).
Disconnect tee - M12 or M16 tinned (Refer table)

Features: Pre-filled with Alminox jointing compound.
Captured hardware permits single tool installation.

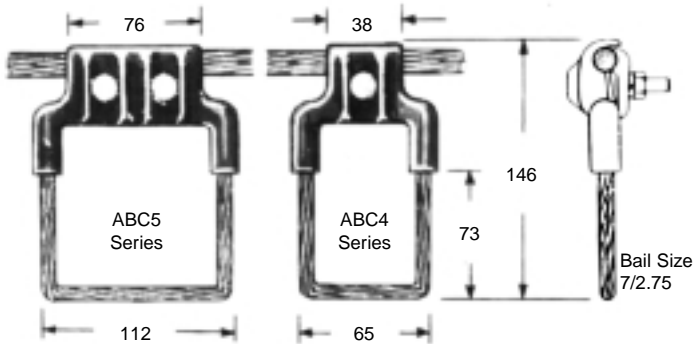
Order details: Each connector packed in individual plastic bag.



Cat. No.	Conductor Range		Stud Size	Conductor Clamp Hardware	Tin Plated Body	Used on Conductor Type
	Stranding	Overall Dia. mm				
ADT5-1			M16	Stainless Steel	No	Aluminium
ADT5-2	7/2.25		M16	Aluminium	No	Aluminium
ADT5-1P	to	6.75 to 18.80	M16	Stainless Steel	Yes	Copper / Al
ADT5-2P	19/3.75		M16	Aluminium	Yes	Copper / Al
ADT5112			M12	Stainless Steel	No	Aluminium

Aluminium Bail Clamp

Type ABC



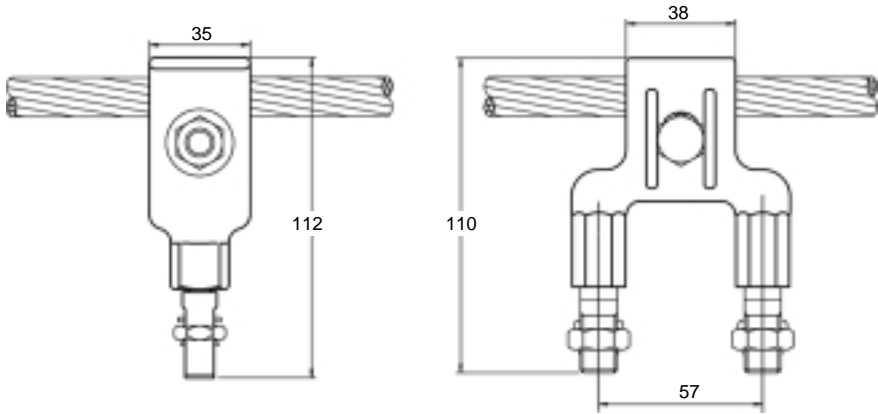
Made from high strength, high conductivity aluminium alloy. The type ABC bail clamp takes a wide range of conductors thus reducing stock. Unique side clamp and generous overlapping clamp body shield the line connection from the weather. Aluminium bolts are captured and permit single spanner installation. Stainless steel hardware is available if required. Supplied pre-filled with Alminox and individually packed in plastic bag.



Cat. No.	Dia. Copper Loop mm	Conductor Range		Weight kg each	Hardware
		Stranding	Overall Dia. mm		
ABC4-1	8.25	7/2.25 to 19/3.75	6.75 to 18.80	0.24	Stainless Steel
ABC4-2	8.25			0.24	Aluminium
ABC5-1	8.25			0.35	Stainless Steel
ABC5-2	8.25			0.35	Aluminium

Service Tee Connectors

Type STC



Cat. No. STC1

Cat. No. STC2

Type STC Tee connectors provide a convenient means of connecting copper service conductors to aluminium overhead mains.

The basic clamp is cast in aluminium and various hardware types are available (refer table). Service conductors are connected to the special tin plated split bolt connector.



Cat. No.	Conductor Range		Weight kg each	Service Conductor Range	Hardware
	Stranding	Overall Dia. mm			
STC1-1	7/2.25	6.75 to 18.80	0.16	Max. three 7/1.70 (16mm ²) cables	Stainless Steel
STC1-2	to				Aluminium
STC1-3	19/3.75				Galv Steel
STC2-1	7/2.25	6.75 to 18.80	0.24	Max. three 7/1.70 (16mm ²) cables in each leg	Stainless Steel
STC2-2	to				Aluminium
STC2-3	19/3.75				Galv Steel

Bolted Connectors & Terminals

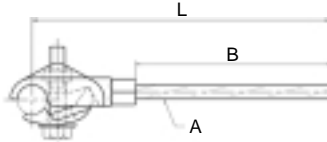
Service Tee Connectors

Type STC - Cont'd

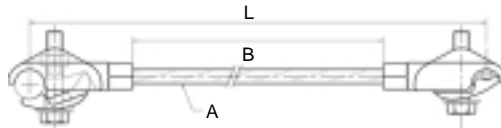
The connector is used with standard line taps when making copper to aluminium service connections.



Cat. No. STC16



Cat. No. STC110 & STC50



Cat. No.	Run Conductor Range	Copper Conductor Stranding A	Appln Length B mm	Total Length L mm	Previous Reference	Mating Line Tap	Hardware
STC16-1	7/2.75 - 19/3.75	7/2.75	125	207	STC1-6	B24	Stainless Steel
STC16-2	7/2.75 - 19/3.75	7/2.75	125	207	STC1-6	B24	Aluminium
STC110-1	7/2.50 - 19/3.75	7/2.75	255	385	STC1-10	B24	Stainless Steel
STC110-2	7/2.50 - 19/3.75	7/2.75	255	385	STC1-10	B24	Aluminium
STC110-3	7/2.50 - 19/3.75	7/2.75	255	385	STC1-10	B24	Galv Steel
STC50-1	19/2.00 - 19/3.75	19/2.00	600	815	-----	B25	Stainless Steel
STC50-2	19/2.00 - 19/3.75	19/2.00	600	815	-----	B25	Aluminium
STC50-3	19/2.00 - 19/3.75	19/2.00	600	815	-----	B25	Galv Steel

Type STC - Cont'd

These clamps are arranged to provide bolted tunnels for service take-off conductors.

Materials: High strength aluminium casting.

Cat. No. STC8050



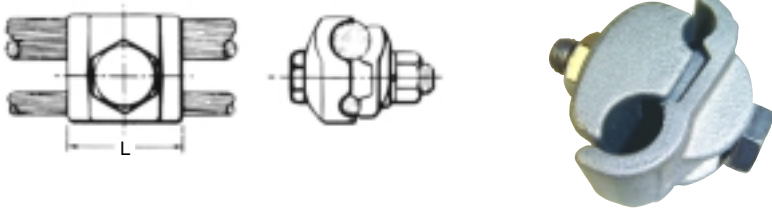
Cat. No. STC50B2



Cat. No.	Run Conductor Range		Weight kg each	Service Cond. Range	Hardware	
	Stranding	Overall Dia.			Clamp	Take Off
STC8050	7/2.50 - 19/3.75	7.5 - 18.80	0.165	Max. two 19/1.35 (25mm ²) cables	Galv Steel	St Steel self cutting
STC50B2	3/2.75 - 19/3.75	5.9 - 18.80	0.273	Max. one 7/3.75 (95mm ²) cable	Galv Steel	Galvanised

Service Tap

Type AC for Aluminium and ACSR Conductors



High strength, high conductivity aluminium alloy, properly proportioned to minimise stress corrosion and deterioration by galvanic action.

Keying tabs on connector body halves prevent mismatching. Hexagon head, high strength bolt provides one wrench installation.

Supplied pre-filled with Alminox joint compound.

Cat. No.	Conductor Range				L mm	Std. Pack	Weight kg each	Hardware
	Run	Overall Dia.	Tap	Overall Dia.				
AC58-1	7/3.00	9.00	7/1.04	3.12	35	10	0.11	Stainless Steel
AC58-2	to	to	to	to				Aluminium
AC58-3	7/4.50	13.50	19/1.78	8.90				Galv Steel
AC75-1	7/4.50	13.50	7/1.75	5.25	44	1	0.23	Stainless Steel
AC75-2	to	to	to	to				Aluminium
AC75-3	19/3.75	18.80	19/2.14	10.70				Galv Steel

Split Bolt Clamp

Type B

Manufactured to E.S.A.A. specification from hard drawn brass. Accommodates two maximum conductors as specified in table below. Standard finish is natural brass. Electro-tinned finish can be supplied when specified. Minimum order quantity is standard pack.



Cat. No.		Max. Conductor		Width of slot	Std. Pack	Std. Pack Weight kg	Mating Plastic Shroud Cat. No.
Natural Brass	Electro Tinned	Area mm ²	Overall Dia.				
B22	B22T	16	5.10	5.30	100	3.00	B22SHROUD
B24	B24T	35	7.65	8.30	50	2.60	
B25	B25T	70	10.70	10.90	25	2.50	
B26	B26T	95	12.60	12.90	20	2.00	
B28	B28T	185	17.64	18.50	5	1.30	



Bolted Connectors & Terminals

Parallel Clamp

Type AUP - for aluminium only

Features: Massive design and large space provide maximum protection against overload conditions. Spacing of U-bolts, tapered bell mouths and modified V-groove minimise cold flow, eliminate cable chafing and produce wiping action on conductors.

Materials: Body - aluminium alloy casting;

Hardware: Stainless steel.



Cat. No.	Conductor Range				Weight each kg
	Run		Tap		
	Stranding	Overall Dia.	Stranding	Overall Dia.	
AUP58	7/2.25 to 7/4.50	6.75 to 13.50	7/2.25 to 7/4.50	6.75 to 13.50	0.42
AUP75	7/3.75 to 19/3.75	11.30 to 18.80	7/3.75 to 19/3.75	11.30 to 18.80	0.84
AUP112	19/3.75 to 61/3.25	18.80 to 29.30	7/3.75 to 37/3.00	11.30 to 21.00	1.22
AUP1122	19/3.75 to 61/3.25	18.80 to 29.30	19/3.75 to 61/3.25	18.80 to 29.30	1.90

Parallel Clamp

Type KA

A rugged connector for heavy duty service connections. Compact construction permits quick and easy insertion of conductors.

Materials: High strength copper content alloy. Neoprene rings capture bolts during installation thus preventing their loss.

Hardware: High strength, corrosion resistant stainless steel bolts, nuts and washers.



Cat. No.	Conductor Range				Weight each kg
	Run		Tap		
	Area mm ²	Overall Dia.	Area mm ²	Overall Dia.	
KA1	25 to 50	6.42 to 8.90	4 to 50	2.55 to 8.90	0.11
KA2	50 to 70	8.90 to 10.70	4 to 70	2.55 to 10.70	0.14
KA3	70 to 95	10.70 to 12.60	4 to 95	2.55 to 12.60	0.25
KA4	120 to 150	14.21 to 15.75	16 to 150	5.10 to 15.75	0.48
KA4C	70 to 185	10.70 to 17.64	35 to 185	7.65 to 17.64	0.51
KA5	185 to 240	17.64 to 20.25	16 to 240	5.10 to 20.25	0.65

Parallel Groove Clamps - Copper



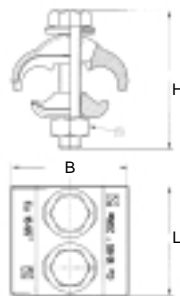
Material is forged copper for copper to copper connection throughout the conductor range. The clamps have serrated transverse grooves for maximum conductor contact, use copper bolts and utilise belleville washers to prevent thermal ratcheting under cyclic loads. The clamps are coated with an oxide inhibitor.

Cat. No.	Replaces	Type	Bolt Torque	Conductor Range		Dimensions mm			No./Size of Bolts	Wt kg
				mm ²	O.D.	L	B	H		
3029-FS	PGC10071 PG06 DPG12 PG0650K PG06702K	F / T	20Nm	6 to 70	2.7 to 10.5	35	35	42	2 x M8	0.19
3030-FS	PGC10092 DPG15 PG16952K	F / T	20Nm	16 to 95	5.1 to 12.5	40	42	50	2 x M8	0.26
3032-FS	PGC16152 DPG25	F / T	30Nm	16 to 150	5.1 to 15.7	50	52	56	2 x M10	0.43
DPG40	N/A	E / N	40Nm	150 to 240	15.7 to 20.3	71	65	70	2 x M12	0.90
DPG60	N/A	E / N	40Nm	300 to 400	22.6 to 26.7	105	75	70	3 x M12	1.67

Type: F = Forged body; T = Transverse groove; E = Extruded body; N = No groove.

Product Selection Matrix

Copper		Area of Cable - Copper - mm ²													
		6	10	16	25	35	50	70	95	120	150	185	240	300	400
Area of Cable - Copper mm ²	6														
	10														
	16														
	25														
	35														
	50														
	70														
	95														
	120														
	150														
	185														
240															
300															
400															



Bolted Connectors & Terminals

Parallel Groove Clamps - Aluminium



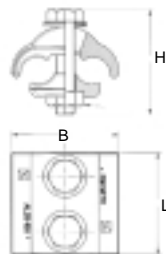
Material is forged aluminium for aluminium to aluminium connection throughout the conductor range. The clamps have serrated transverse grooves for maximum conductor contact, use galvanised steel bolts and utilise Belleville washers to prevent thermal ratcheting under cyclic loads. The clamps are coated with an oxide inhibitor.

Cat. No.	Replaces	Type	Bolt Torque	Conductor Range		Dimensions mm			No./Size of Bolts	Wt kg
				mm ²	O.D.	L	B	H		
3929-FS	PGA16072	F / T	22 Nm	16 to 70	5.1 to 10.5	40	36	40	2 x M8	0.09
3931-FS	PGA16122 AA161202	F / T	22 Nm	16 to 120	5.1 to 14.0	50	45	50	2 x M8	0.14
3932-FS	PGA25152	F / T	40 Nm	25 to 150	6.3 to 15.7	55	50	50	2 x M10	0.21
3594-FS	AA352402	E / P	40 Nm	35 to 240	7.5 to 20.2	70	65	76	2 x M10	0.39
PGA35303	AA351853**	F / T	46 Nm	35 to 300	7.5 to 22.5	105	65	75	3 x M10	0.46
	PGA35303									
	AA953003									

Type: F = Forged body; T = Transverse groove; E = Extruded body; N = No groove; P = Parallel
 ** 2 bolt version available - Cat. No. 3553-FS

Product Selection Matrix

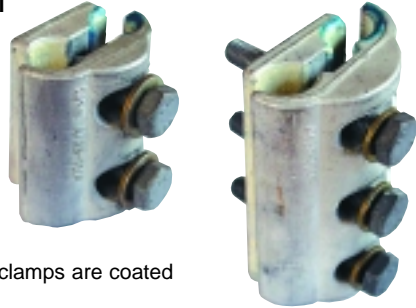
Alum	Area of Cable - Aluminium - mm ²													
	6	10	16	25	35	50	70	95	120	150	185	240	300	400
6														
10														
16														
25														
35														
50														
70														
95														
120														
150														
185														
240														
300														
400														



Bolted Connectors & Terminals

Parallel Groove Clamps - Bimetal

Material is forged aluminium clamp with a friction welded copper insert clearly marked in blue for making copper conductor connections. The clamps have serrated transverse grooves for maximum conductor contact, use galvanised steel bolts and utilise belleville washers to prevent thermal ratcheting under cyclic loads. The clamps are coated with an oxide inhibitor.

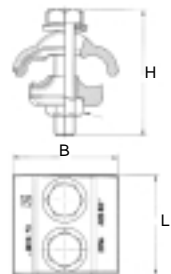


Cat. No.	Replaces	Type	Bolt Torque	Conductor Range				Dimensions			No./Size of Bolts	Wt kg
				Aluminium Run		Copper Tap		mm				
				mm ²	O.D.	mm ²	O.D.	L	B	H		
3920	PGB10121-015	F / T	29 Nm	16 - 95	12.5 - 12.5	1.5 - 10	1.4 - 4.1	30	43	45	1 x M8	0.18
3949-FS	PGB10121	F / T	29 Nm	16 - 70	5.1 - 11.7	6 - 50	2.75 - 9.0	30	43	45	1 x M8	0.18
3909-FS	PGB16072	F / T	22 Nm	16 - 95	12.5 - 12.5	6 - 50	2.75 - 9.0	40	42	45	2 x M8	0.11
3911-FS	PGB25152	F / T	22 Nm	25 - 150	6.3 - 15.70	10 - 95	5.10 - 12.50	40	45	50	2 x M8	0.15
3913-FS	PGB35183	F / T	25 Nm	35 - 185	7.50 - 17.50	35 - 185	7.50 - 17.50	96	57	66	3 x M10	0.44
3915-FS	PGB35303	F / T	25 Nm	35 - 300	7.50 - 22.50	35 - 240	7.50 - 20.20	105	65	76	3 x M10	0.68

Type: F = Forged body; T = Transverse groove

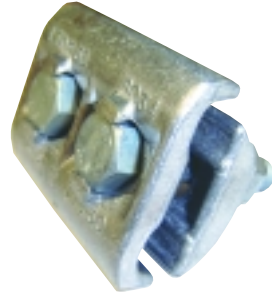
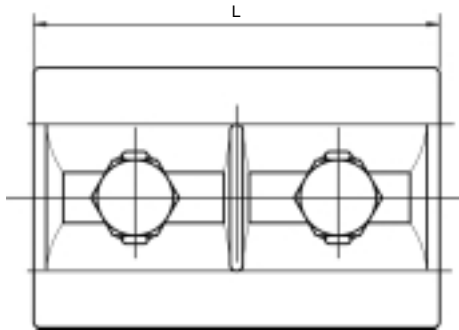
Product Selection Matrix

Bi-metal		Area of Cable - Aluminium - mm ²														
		1.5	6	10	16	25	35	50	70	95	120	150	185	240	300	400
Area of Cable - Copper mm ²	1.5															
	6															
	10															
	16															
	25															
	35															
	50															
	70															
	95															
	120															
	150															
	185															
240																
300																
400																



Parallel Groove Clamps

Type LTDP with Parallel Sides



A universal aluminium line tap for equal and unequal combinations of aluminium and ACSR conductors.

Materials: Die cast aluminium

Cat. No.	Conductor Range				L mm	Hardware
	Run		Tap			
	Stranding	Overall Dia.	Stranding	Overall Dia.		
LTDP58-2	7/1.75 to 7/4.50	5.25 to 13.50	7/1.75 to 7/4.50	5.25 to 13.50	70	Aluminium
LTDP58-3	7/1.75 to 7/4.50	5.25 to 13.50	7/1.75 to 7/4.50	5.25 to 13.50	70	Galv Steel
LTDP75-2	7/2.50 to 19/3.75	7.50 to 19.00	7/2.50 to 19/3.75	7.50 to 19.00	95	Aluminium
LTDP75-3	7/2.50 to 19/3.75	7.50 to 19.00	7/2.50 to 19/3.75	7.50 to 19.00	95	Galv Steel

Notes: For aluminium to copper connections add 'P' for plating e.g. LTDP75-2P.
Not recommended for polluted or coastal locations.

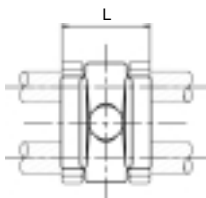
Bolted Connectors & Terminals

Parallel Groove Clamps

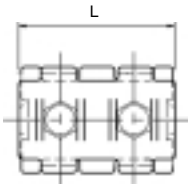
Type LT, LTD, LTX with Interlocking Fingers



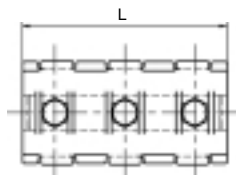
Type LT



Type LTD



Type LTX



A universal aluminium line tap for equal and unequal combinations of aluminium and ACSR conductors. The clamp has interlocking fingers for maximum conductor contact.

Materials: Die cast aluminium

Cat. No.	Conductor Range				Fig. No.	L mm	Hardware
	Run		Tap				
	Stranding	Overall Dia.	Stranding	Overall Dia.			
LT43-1	7/1.70 - 7/3.75	5.10 - 11.30	7/1.70 - 7/3.75	5.10 - 11.30	1	35	St Steel
LT43-2	7/1.70 - 7/3.75	5.10 - 11.30	7/1.70 - 7/3.75	5.10 - 11.30	1	35	Aluminium
LT43-3	7/1.70 - 7/3.75	5.10 - 11.30	7/1.70 - 7/3.75	5.10 - 11.30	1	35	Galv Steel
LT75-1	19/1.78 - 19/3.75	8.90 - 18.80	19/1.78 - 19/3.75	8.90 - 18.80	1	48	St Steel
LT75-2	19/1.78 - 19/3.75	8.90 - 18.80	19/1.78 - 19/3.75	8.90 - 18.80	1	48	Aluminium
LT75-3	19/1.78 - 19/3.75	8.90 - 18.80	19/1.78 - 19/3.75	8.90 - 18.80	1	48	Galv Steel
LTD58-1	7/1.75 - 7/4.50	5.25 - 13.50	7/1.75 - 7/4.50	5.25 - 13.50	2	70	St Steel
LTD58-2	7/1.75 - 7/4.50	5.25 - 13.50	7/1.75 - 7/4.50	5.25 - 13.50	2	70	Aluminium
LTD58-3	7/1.75 - 7/4.50	5.25 - 13.50	7/1.75 - 7/4.50	5.25 - 13.50	2	70	Galv Steel
LTD75-1	19/1.78 - 19/3.75	8.90 - 18.80	19/1.78 - 19/3.75	8.90 - 18.80	2	95	St Steel
LTD75-2	19/1.78 - 19/3.75	8.90 - 18.80	19/1.78 - 19/3.75	8.90 - 18.80	2	95	Aluminium
LTD75-3	19/1.78 - 19/3.75	8.90 - 18.80	19/1.78 - 19/3.75	8.90 - 18.80	2	95	Galv Steel
LTX75-1	7/3.00 - 19/3.75	9.00 - 18.80	7/3.00 - 19/3.75	9.00 - 18.80	3	110	St Steel
LTX75-2	7/3.00 - 19/3.75	9.00 - 18.80	7/3.00 - 19/3.75	9.00 - 18.80	3	110	Aluminium
LTX75-3	7/3.00 - 19/3.75	9.00 - 18.80	7/3.00 - 19/3.75	9.00 - 18.80	3	110	Galv Steel
LTX126-1	19/3.25 - 61/3.75	16.30 - 33.80	19/3.25 - 61/3.75	16.30 - 33.80	3	191	St Steel
LTX126-3	19/3.25 - 61/3.75	16.30 - 33.80	19/3.25 - 61/3.75	16.30 - 33.80	3	191	Galv Steel

Notes: For aluminium to copper connections add 'P' for plating e.g. LTD75-2P.
Not recommended for polluted or coastal locations.

Bolted Connectors & Terminals

Easitap - Tee Off Connectors

Type V

Type V-ET

An extremely versatile three-piece connector for all combinations of mains and tee off conductors. Typical connections include: Parallel tap; Tee connections; Cross connections and End-to-end connections.

Materials: Current carrying centre plate and outer planes are high strength copper alloy, Type V-ET are electro tinned.

Hardware: Stainless steel
All edges rounded for easy insertion of conductor.



Typical Connections



Type V Cat. No.	Type VET Cat. No.	Fig. No.	Metric Conductor Range								Dimensions mm			
			Run				Tap							
			Area mm ² Min.	Area mm ² Max.	O.D. Min.	O.D. Max.	Area mm ² Min.	Area mm ² Max.	O.D. Min.	O.D. Max.	B	H	J	W
V1B	VET1	1	16	35	5.10	7.65	16	35	5.1	7.65	35	40	8	37
V2B	VET2	1	50	95	8.90	12.60	16	35	5.1	7.65	37	49	8	41
V3B	VET3	1	50	95	8.90	12.60	50	95	8.9	12.46	46	56	10	46
V4B	VET4	1	120	240	14.21	20.25	16	35	5.1	7.65	37	56	8	49
V5B	VET5	1	120	240	14.21	20.25	50	95	8.9	12.46	43	57	10	46
V6B	VET6	2	120	240	14.21	20.25	120	240	14.21	20.25	52	70	10	52
V7B	VET7	1	240	500	20.25	28.80	16	35	5.1	7.65	37	62	8	59
V8B	VET8	1	240	500	20.25	28.80	50	95	8.9	12.46	46	73	10	62
V9B	VET9	2	240	500	20.25	28.80	120	240	14.21	20.25	52	78	10	62
V10B	VET10	2	240	500	20.25	28.80	240	500	20.25	28.80	62	87	10	62

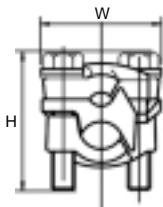


Fig. 1

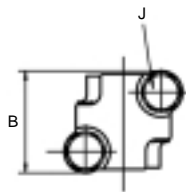
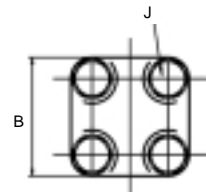
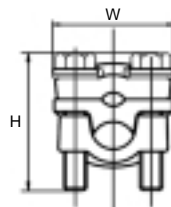


Fig. 2



Bolted Connectors & Terminals

Kulugs

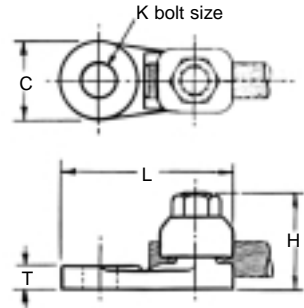
Type Q

For use wherever conductors are terminated. Easy installation - only a single nut to tighten. High mechanical strength, simple to disconnect, reusable.



Type Q

Material: Brass clamp body & nut

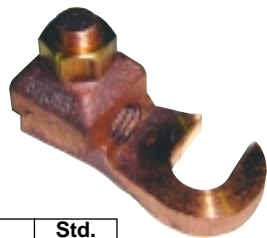


Cat. No.	Old Ref.	Conductor Range		Dimensions mm					Std. Pack
		Area mm ²	Overall Dia. mm	C	H	K	L	T	
H1802	Q2	10 - 16	4.05 - 5.10	19	25	M8	41	6	10
H1803	Q3	25 - 35	6.75 - 7.65	25	27	M10	53	5.5	10
H1804	Q4	50 - 70	8.90 - 10.70	32	34	M12	60	6.4	10
H1805	Q5	70 - 95	10.70 - 12.60	32	38	M12	65	7.9	10
H1806A	Q6	120	14.21 - 15.75	38	45	M16	76	8.7	1
H1806	Q6	150 - 185	15.75 - 17.64	38	45	M16	76	8.7	1
H1807	Q7	185 - 240	17.64 - 20.25	44	53	M20	86	10.3	1
H1808	Q8	300 - 400	22.68 - 25.65	51	63	M20	98	12.7	1

Slotted Kulugs

Type SQ

Material: Brass clamp body & nut



Cat. No.	Conductor Range		Dimensions mm					Std. Pack
	Area mm ²	Overall Dia. mm	C	H	Slot	L	T	
SQ6	120 - 150	14.21 - 15.75	37	47	M16	73	12	25

