

TERMCO STANDARD LUGS

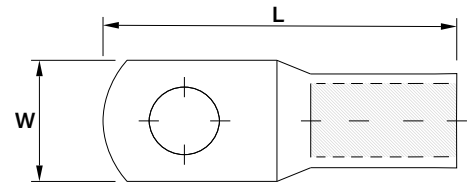
Key Features:

- **Manufactured to IEC61238-1 & AS/NZS4325.1**
- **99.9% Conductivity by I.A.C.S standards**
- **Made to Australian Dimensions**
- **Suitable for connecting copper conductors in both indoor and outdoor applications**
- **Electro Tinned**
- **For Cables: 1.5mm² - 1000mm²**



Termco standard Copper Crimp Lugs – For generic cable termination, the Termco Copper Crimp Lug provides a sturdy, reliable connection and solid crimp of any cable from 1.5mm² – 1000mm².

All Termco Copper Lugs and Links are made to the highest possible specifications and are electro tinned finished. Manufactured to Australian dimensions, the Termco Copper Lugs and Links comply with both IEC61238-1 and AS/NZS4325.1 Standards for Compression and Mechanical Connectors.



Part Number	Cable Size	Stud Size (mm)	Overall Width W (mm)	Overall Length L (mm)	Pack Qty	Recommended Dieset & Tool
TCL1.5-4	1.5mm ²	4	8	18.5	100	#103
TCL1.5-5	1.5mm ²	5	8	18.5	100	
TCL1.5-6	1.5mm ²	6	10	20.5	100	
TCL2.5-4	2.5mm ²	4	8	18	100	
TCL2.5-5	2.5mm ²	5	10	20	100	
TCL2.5-6	2.5mm ²	6	10	20	100	
TCL2.5-8	2.5mm ²	8	11	24	100	
TCL4-4	4mm ²	4	10	23	100	
TCL4-5	4mm ²	5	10	22	100	
TCL4-6	4mm ²	6	10	22	100	
TCL4-8	4mm ²	8	12	26	100	
TCL4-10	4mm ²	10	12	32	100	
TCL6-4	6mm ²	4	10	22.5	100	38-44CU B1350-CT
TCL6-5	6mm ²	5	10	23	100	
TCL6-6	6mm ²	6	12	27	100	
TCL6-8	6mm ²	8	12	27	100	
TCL6-10	6mm ²	10	16	32	100	
TCL10-4	10mm ²	4	11	27	100	38-57CU B1350-CT
TCL10-5	10mm ²	5	12	27	100	
TCL10-6	10mm ²	6	12	27	100	
TCL10-8	10mm ²	8	14	29	100	
TCL10-10	10mm ²	10	16	32	100	
TCL10-12	10mm ²	12	18	32	100	
TCL16-5	16mm ²	5	11	37	50	38-63CU B1350-CT
TCL16-6	16mm ²	6	11	37	50	

Part Number	Cable Size	Stud Size (mm)	Overall Width W (mm)	Overall Length L (mm)	Pack Qty	Recommended Dieset & Tool
TCL16-8	16mm ²	8	14	39	50	38-63CU B1350-CT
TCL16-10	16mm ²	10	16	41	50	
TCL16-12	16mm ²	12	18	46	50	
TCL25-5	25mm ²	5	13.5	41	50	38-77CU B1350-CT
TCL25-6	25mm ²	6	13.5	41	50	
TCL25-8	25mm ²	8	13.5	41	50	
TCL25-10	25mm ²	10	16	44	50	
TCL25-12	25mm ²	12	18	48	50	38-92CU B1350-CT
TCL35-5	35mm ²	5	16	44	50	
TCL35-6	35mm ²	6	16	44	50	
TCL35-8	35mm ²	8	16	44	50	
TCL35-10	35mm ²	10	18	46	50	38-104CU B1350-CT
TCL35-12	35mm ²	12	20	51	50	
TCL35-16	35mm ²	16	23	58	50	
TCL50-6	50mm ²	6	18	48	50	38-104CU B1350-CT
TCL50-8	50mm ²	8	18	48	50	
TCL50-10	50mm ²	10	18	48	50	
TCL50-12	50mm ²	12	21	52	50	
TCL50-16	50mm ²	16	25	57	50	38-115CU B1350-CT
TCL70-6	70mm ²	6	21	54	35	
TCL70-8	70mm ²	8	21	54	35	
TCL70-10	70mm ²	10	21	54	35	
TCL70-12	70mm ²	12	21	54	35	
TCL70-16	70mm ²	16	28	54	35	

Lug sizes 95mm² - 630mm² can be found on page 2

Engineering Supplies PTY LTD

Our Aim

Engineering Supplies aims to be the first supplier of choice and always exceed its customer's expectations through competitive pricing, quality products and exceptional service. Large stock holdings enable Engineering Supplies to meet customer requirements in a timely manner.

Our Products

Importers of cable ties, cable wraps & glands, electrical insulations, lugs and terminals, switchboard laminates & accessories and act as distributors of quality brands such as KSS, Raychem, Utilux, Dulmison, Critchley and Termco amongst others. Engineering Supplies is also the West Australian distributor for Dry Treat sealers and Semikron power electronic components.



Sales Email
sales@engsup.com.au
Accounts
accounts@engsup.com.au



Sales & Dispatch
146 Welshpool Road
Welshpool WA 6106
Open 8:00am - 5:00pm AWST



Sales Number
+61 08 9258 8444
Fax Number
+61 08 9258 8344

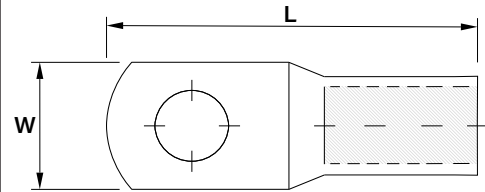


Website
engineering supplies.com.au



TERMCO STANDARD LUGS

Part Number	Cable Size	Stud Size (mm)	Overall Width (mm)	Overall Length (mm)	Pack Qty	Recommended Dieset & Tool
TCL95-6	95mm ²	6	25	64	25	38-142CU B1350-CT
TCL95-8	95mm ²	8	25	60	25	
TCL95-10	95mm ²	10	25	60	25	
TCL95-12	95mm ²	12	25	60	25	
TCL95-16	92mm ²	16	28	64	25	
TCL120-8	120mm ²	8	29.5	64	15	38-165CU B1350-CT
TCL120-10	120mm ²	10	29.5	64	15	
TCL120-12	120mm ²	12	29.5	64	15	
TCL120-16	120mm ²	16	29.5	68	15	
TCL120-20	120mm ²	20	32	83.5	15	
TCL150-10	150mm ²	10	32	71	12	38-183CU B1350-CT
TCL150-12	150mm ²	12	32	80	12	
TCL150-16	150mm ²	16	32	80	12	
TCL185-10	185mm ²	10	34.8	74	10	38-200CU B1350-CT
TCL185-12	185mm ²	12	34.8	83	10	
TCL185-16	185mm ²	16	34.8	83	10	
TCL240B	240mm ²	Blank	40	92	12	38-231CU B1350-CT
TCL240-10	240mm ²	10	40	92	12	
TCL240-12	240mm ²	12	40	92	12	
TCL240-14	240mm ²	14	39	92	12	
TCL240-16	240mm ²	16	40	92	12	
TCL300B	300mm ²	Blank	44.7	101	9	38-260CU B1350-CT
TCL300-12	300mm ²	12	44.7	101	9	
TCL300-16	300mm ²	16	44.7	101	9	
TCL400B	400mm ²	Blank	50	114	5	25T-281CU ECW-H3D
TCL400-12	400mm ²	12	50	116	5	
TCL400-16	400mm ²	16	50	116	5	
TCL400-20	400mm ²	20	50	116	5	
TCL500B	500mm ²	Blank	56	124	4	25T-310CU ECW-H3D
TCL500-12	500mm ²	12	56	128	4	
TCL500-16	500mm ²	16	56	129	4	
TCL630B	630mm ²	Blank	64.4	134	3	25T-370CU ECW-H3D
TCL630-12	630mm ²	12	64.4	140	3	
TCL630-16	630mm ²	16	64.4	140	3	
TCL630-20	630mm ²	20	64.4	140	3	
TCL800B	800mm ²	Blank	75	275	3	40-432CU RHU600
TCL1000B	1000mm ²	Blank	85	295	2	40-480CU RHU600



Other Termco Lugs Available:

Bell Mouth Lug:

Narrow Palm Lug:



Reducing Link:

Straight Through Link:



Long Palm Long Barrel:



Dies to suit also available on request

Engineering Supplies PTY LTD

Our Aim

Engineering Supplies aims to be the first supplier of choice and always exceed its customer's expectations through competitive pricing, quality products and exceptional service. Large stock holdings enable Engineering Supplies to meet customer requirements in a timely manner.

Our Products

Importers of cable ties, cable wraps & glands, electrical insulations, lugs and terminals, switchboard laminates & accessories and act as distributors of quality brands such as KSS, Raychem, Utilux, Dulmison, Critchley and Termco amongst others. Engineering Supplies is also the West Australian distributor for Dry Treat sealers and Semikron power electronic components.



Sales Email
sales@engsup.com.au
Accounts
accounts@engsup.com.au



Sales & Dispatch
146 Welshpool Road
Welshpool WA 6106
Open 8:00am - 5:00pm AWST



Sales Number
+61 08 9258 8444
Fax Number
+61 08 9258 8344



Website
engineering supplies.com.au